



metropolitan family services™

ANNUAL REPORT 2022

families **m**powered





metropolitan
family services

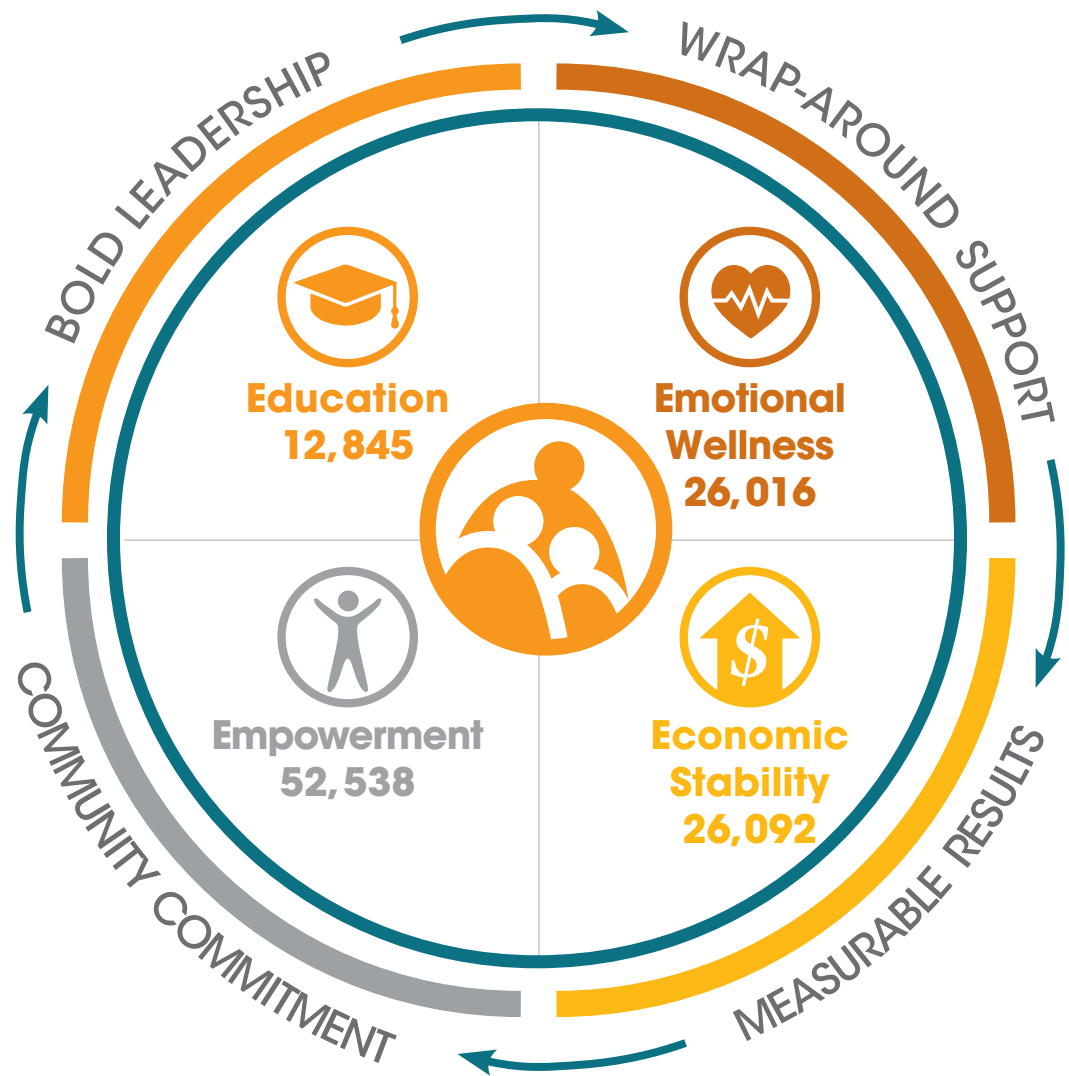
Metropolitan Family Services **m**powers families
to learn, to earn, to heal and to thrive.

Part mentor, part motivator, part advocate,
since 1857 **m**etropolitan Family Services has
been the engine of change that **m**powers
families to reach their greatest potential and
positively impact their communities.

mpowered for life



HOLISTIC STRATEGY TO EMPOWER FAMILIES



ECONOMIC STABILITY

We equip strong, self-sustaining families with the tools to find and maintain employment, achieve financial literacy, and build family wealth.



EMPOWERMENT

We help families stand up and be heard by providing legal aid, violence prevention, and domestic violence services.



EDUCATION

We prepare young people and parents for success, from the early years throughout school, and all the way to college.



EMOTIONAL WELLNESS

We encourage healthy and productive lives through counseling and mental health services, parenting and family support and older adult services.

FAMILY Values



FOCUS ON STRENGTHS

As servant leaders, we value individuals, families and communities, their inherent strengths, their ability to learn and grow, be resilient and find solutions to challenges. Our servant mindset inspires us to help people reach their full potential and own their empowerment.



ACCOUNTABILITY

We are honest and transparent, effectively managing resources entrusted to us, and in turn, investing in the people and communities we serve.



MOBILIZE FOR SOCIAL JUSTICE

We work to increase diversity, racial, gender and economic equity, inclusion and cultural competency in all that we do.



INNOVATIVE CULTURE

We are agile, responsive to complex and emerging social challenges. We are equally agile in our operations and management functions, while maintaining the integrity of our operational and management systems.



LEARNING ORGANIZATION

We value experience gained from mistakes, knowing this is key to continuous improvement and greater wisdom.



YES-MINDED APPROACH

We look for what is possible and find creative solutions, transforming challenges into viable opportunities.

Our Mission

To provide and mobilize the services needed to strengthen families and communities.

Our Vision

To be widely acknowledged as a major catalyst and resource for promoting family and community strengths.

This year, MFS celebrates “community” – and here, community starts from within.

Community is built on people’s connections, including in the workplace. Our community continues to touch thousands of clients and families, and our thousand-member staff continues to go above and beyond to ensure our services reach clients where they are. They’ve continued to innovate through in-person and online services. We are extremely grateful to the MFS team, both for this past year and throughout the pandemic, for their enduring commitment to keeping families and communities strong.

Much has happened in the last 12 months! Highlights include the \$3 million transfer of assets from MFS to leaders in Chicago’s West Englewood community through We Grow Chicago (We Grow). We Grow is a neighborhood-based coalition led by Imagine Englewood if, Metropolitan Family Services and three local, Black-led organizations including Growing Home, Grow Greater Englewood and Teamwork Englewood.

We Grow owns 15 properties on the “Peace Campus,” which spans the 6400 block of South Honoré Street. We are excited to share that plans are in the works to transform one of the Peace Campus homes into a state-of-the-art digital technology center, operated by MFS and We Grow, where we will train youth for some of the most promising careers of the future. Speaking of the MFS/We Grow partnership, we couldn’t be more enthused about local leaders being empowered to chart the future of their communities!

At MFS, we’ve also been working diligently to improve our infrastructure for better service delivery. That includes refining our behavioral health systems, launching an in-depth review of our careers platforms and processes, and developing a new Intake and Referral Program. The latter will make it much easier and quicker for us to connect clients with services, in ways that more efficiently equip clients to choose the services that best support their unique needs.

Board Chair Ashley Duchossois Joyce culminates her three-year term in October 2022. She graciously extended her tenure for another year, providing the agency with additional stability through the pandemic. Ashley played an instrumental role in increasing Board engagement, further diversifying our Board membership to better reflect those we serve, and changing Board committees to inspire new ideas and impact.

MFS honors Ashley’s many contributions to our agency. Her Board service is the most recent example of a deep commitment that spans more than two decades. We also look forward to David Tropp assuming the Chairmanship in fall 2022. Bringing close to three decades of experience with MFS as a Board member, David’s leadership shows how our Board is stronger than ever.

All of our growth and transition could not be possible without our community members, drivers and leaders, both internal and external. We thank you so much for your continued faith in our mission to Mpower Chicagoland!



Ric Estrada
President & CEO



Ashley Duchossois Joyce
Board Chair





WORKFORCE DEVELOPMENT

Workforce Development at Metropolitan means consistently developing and reworking spaces of community. Whether those spaces are physical – gaining hands-on experience at work sites, building a Free Library for our Altgeld Gardens residents – or emotional – cultivating a safety net of wraparound support for job-seekers and their families – we’re committed to empowering our communities to persevere through life’s challenges.

As we celebrate the culmination of 20 years of Workforce Development at Metropolitan, we’ve opened a new space dedicated to empowering job-seekers well into the future: our Jones Center! As we expand our programming and develop connections with employer partners, we’re seeing growth. Growth of diversity in trades, of bridging our work with youth into our work with adults; we’re seeing the benefits in a community’s workforce being of the community.





BEHAVIORAL HEALTH

Amanda remembers a major moment of progress for her family: sitting down at the dinner table, all together.

Amanda and her husband had received support as foster parents, but those services dissipated once they adopted their children. She and her family needed consistency and support. Her three children had all experienced vastly different traumas, and their unique needs and behaviors created “a state of chaos,” as Amanda put it. “When Brenda walked in the door, I was so excited and grateful. There was this calm and this peace. She just heard, and understood, and saw what was happening.”

“It’s been the consistency and the trusted voice I so appreciate. I’m so grateful for continued services now, because we need them but we’ve grown so much, and so it’s exciting. It’s exciting because there’s hope.”

– Amanda, Metropolitan DuPage client



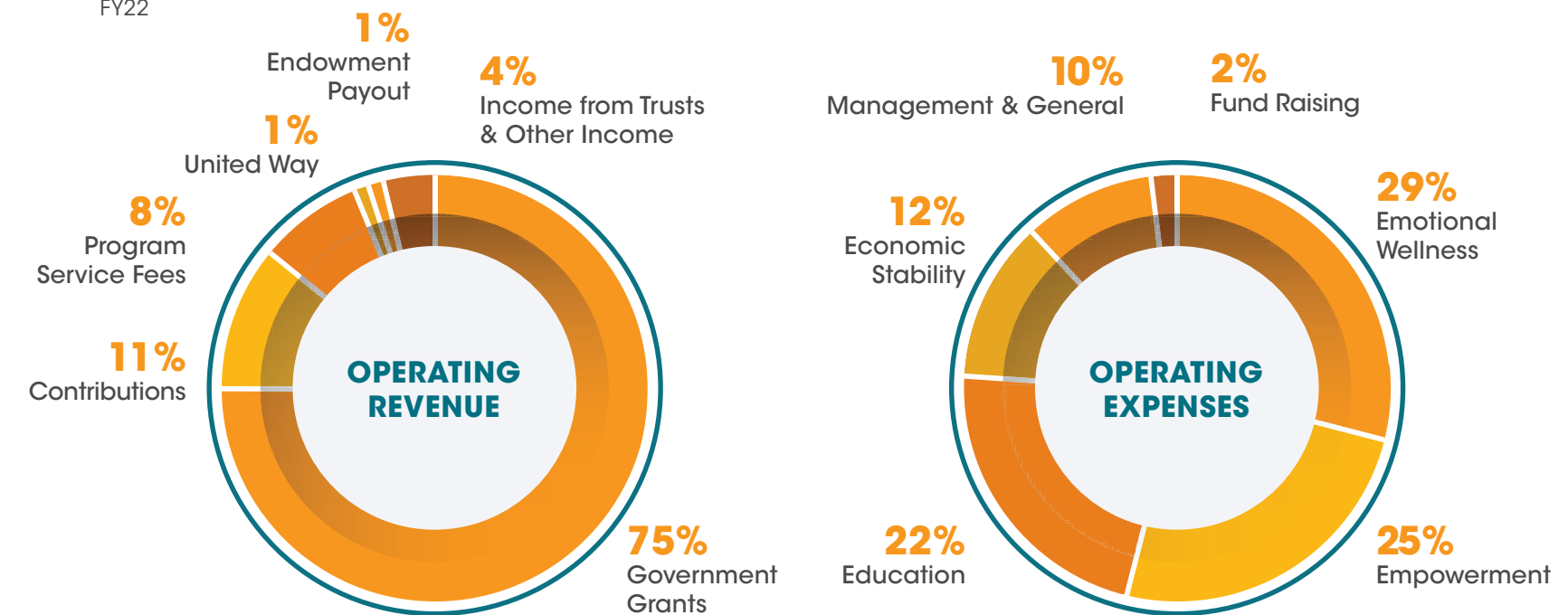
STATEMENT OF ACTIVITIES

Years Ended June 30, 2022 and 2021
Amounts in 000's

	2022	2021
OPERATING REVENUE		
Government Grants	79,921	65,526
Program Service Fees	8,273	9,235
Contributions	11,370	9,263
United Way	1,403	1,559
Endowment Payout	1,668	1,668
Income from Trusts & Other Income	4,107	8,257
TOTAL OPERATING REVENUE	106,742	95,508
OPERATING EXPENSES		
PROGRAM EXPENSES		
Emotional Wellness	30,546	25,921
Empowerment	27,254	22,366
Education	23,868	22,157
Economic Stability	12,721	12,647
Total Program Expenses	94,389	83,091
Management & General	10,461	9,691
Fund Raising	2,398	2,533
TOTAL OPERATING EXPENSES	107,248	95,315
OPERATING SURPLUS (DEFICIT)	(506)	193
OTHER CHANGES IN NET ASSETS		
Depreciation & Amortization	(1,019)	(862)
Net Investment Gains (Losses)	(9,562)	11,995
Change in Pension Liability	(213)	4,354
Change in Market Value of Interest Rate Swap	1,530	1,011
PPE Loan	9,670	
Other	2,405	(1,521)
NON OPERATING ACTIVITY	2,811	14,977
TOTAL CHANGE IN NET ASSETS	2,305	15,170
NET ASSETS AT BEGINNING OF YEAR	73,902	58,732
NET ASSETS AT END OF YEAR	76,207	73,902
Contribution for Goods and Services	3,428	3,388

BREAKDOWN OF EXPENSES

FY22



STATEMENT OF FINANCIAL POSITION

June 30, 2022 and 2021
Amounts in 000's

	2022	2021
ASSETS		
Cash	12,220	13,512
Receivables	22,115	13,507
Investments	42,253	50,732
Interest in trusts	16,656	19,873
Property and equipment	22,470	20,683
Other	1,072	1,067
Construction work in Progress	4,222	0
TOTAL ASSETS	121,008	119,374
LIABILITIES AND NET ASSETS		
Accounts payable and accruals	11,992	11,081
Investment Bond	2,500	2,500
PPP Loan	0	9,670
NMTC Notes	10,835	0
Bonds payable	12,700	12,700
Pension liability	544	2,749
Other	6,230	6,772
TOTAL LIABILITIES	44,801	45,472
NET ASSETS	76,207	73,902
TOTAL LIABILITIES AND NET ASSETS	121,008	119,374

117,491 lives **m**powered!

Transforming lives across seven community centers,
24 satellite and offsite locations, and beyond



CALUMET
13,613 Clients

235 East 103rd St.
Chicago, IL 60628
773-371-3600

Serving Beverly, Chatham, Englewood, Morgan Park, Mount Greenwood, Pullman, Riverdale, Roseland, Washington Heights, Washington Park, West Pullman and Woodlawn



NORTH
15,605 Clients

3249 North Central Ave.
Chicago, IL 60634
773-371-3700

Serving Belmont Cragin, Hermosa, Irving Park and Portage Park



DUPAGE
36,033 Clients

222 East Willow Ave.
Wheaton, IL 60187
630-784-4800

Serving all communities of DuPage County, including Wheaton, Elmhurst, Naperville, West Chicago, Woodridge and Addison



SOUTHEAST CHICAGO
4,150 Clients

3062 East 91st St.
Chicago, IL 60617
773-371-2900

Serving Calumet Heights, East Side, Hegewisch, South Chicago and South Deering



EVANSTON/SKOKIE VALLEY
1,608 Clients

5210 Main St., Skokie, IL 60077
847-425-7500

820 Davis St., Ste 218
Evanston, IL 60201
847-425-7400

Serving Des Plaines, Evanston, Golf, Lincolnwood, Morton Grove, Niles and Skokie



SOUTHWEST
17,004 Clients

10537 South Roberts Rd.
Palos Hills, IL 60465
708-974-2300

11560 S. Kedzie Ave., Suite 200
Merrionette Park, IL 60803
708-974-5800

Serving Blue Island, Robbins, Ford Heights, Posen, Harvey, Evergreen Park, Oak Lawn, Alsip, Hickory Hills, Chicago Ridge, Palos Hills, Orland Park, Tinley Park, Oak Forest, Midlothian, Merrionette Park



MIDWAY
12,763 Clients

3843 West 63rd St.
Chicago, IL 60629
773-884-3310

Serving Brighton Park, Chicago Lawn, Clearing, Englewood, Gage Park, New City, West Englewood and West Lawn



HEADQUARTERS
16,715 Clients

101 North Wacker, Suite 1700
Chicago, IL 60606
312-986-4000

The Legal Aid Society
312-986-4200

Employee Assistance Network
312-986-4249

OUR COMMUNITIES

MCHENRY COUNTY

LAKE COUNTY

COOK COUNTY

KANE COUNTY

DUPAGE COUNTY

KENDALL COUNTY

GRUNDY COUNTY

WILL COUNTY

m
EVANSTON /
SKOKIE VALLEY

m
NORTH

CHICAGO

m
HEADQUARTERS

m
MIDWAY

m
SOUTHWEST

m
CALUMET

m
SOUTHEAST CHICAGO

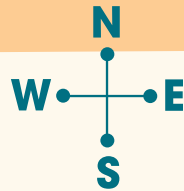
m COMMUNITY CENTER

● SATELLITE LOCATION

■ CP4P PARTNER COMMUNITY

● OFFSITE SERVICES

★ BEHAVIORAL HEALTH CONSORTIUM (BHC)



Metropolitan Family Services provides Education and/or Emotional Wellness services at its sites and offsite in client homes, schools, hospitals and other locations throughout all counties shown above.

The Behavioral Health Consortium includes Metropolitan and 11 other behavioral health providers and serves Medicaid, Medicare and commercial insurance recipients.

THANK YOU TO OUR METROPOLITAN FAMILY

Our family of supporters forms the heart of community empowerment at Metropolitan Family Services. Your engagement in and on behalf of the communities we serve transforms challenges into opportunities. Together, we’re Mpowering 117,491 children and families to learn, earn, heal, and thrive!



GOVERNMENT

Addison School District #4
Bensenville School District
Chicago Board of Education
Chicago Cook Workforce
Chicago Department of Family & Support Services
Chicago Department of Housing
Chicago Department of Public Health
Chicago Housing Authority
Chicago State University
College of DuPage
Cook County
DuPage County
DuPage County Treasurer
City of Elmhurst
City of Evanston
City of Naperville
Federal Emergency Management Agency
Illinois Attorney General
Illinois Capital Development Board
Illinois Community College Board
Illinois Coalition Against Domestic Violence
Illinois Criminal Justice Information Authority
Illinois Department of Child and Family Services
Illinois Department of Human Services
Illinois Department on Aging
Illinois Secretary of State
Illinois State Board of Education
Milton Township
City of Naperville
National Institute of Justice
Niles Township
US Department of Education
US Department of Health & Human Services
US Department of Housing & Urban Development
US Department of Justice
Wheaton-Warrenville School District

FOUNDATION, ORGANIZATION AND CORPORATE DONORS

\$100,000,000 and above
The Howard G. Buffett Foundation
The Chicago Community Trust

\$100,000 to \$999,999
Anonymous
BlueCross BlueShield of Illinois
The Chicago Bar Foundation
Crown Family Philanthropies
Dunham Foundation
Finnegan Family Foundation
The Harry and Jeanette Weinberg Foundation
Hochschild Family Fund
Illinois Equal Justice Foundation
Institute for Nonviolence Chicago
Jenies Family Foundation
JP Morgan Chase Foundation
Kirkland & Ellis LLP
Lawyers Trust Fund of Illinois
Lloyd A. Fry Foundation
Local Initiatives Support Corporation (LISC)
Michael Reese Health Trust
Nathan and Emily Blum Fund
NFL Foundation
Polk Bros. Foundation
Pritzker Pucker Family Foundation
Ralla Klepak Foundation for Education in the Performing Arts
Robert R. McCormick Foundation
Silicon Valley Community Foundation
Start Early
Stearns Family Foundation
STEM Next Opportunity Fund
Wellington Management Foundation

\$50,000 to \$99,999
Anonymous
Bank of America
Bowman C. Lingle Trust
Seymour A. Cohen Family Foundation
Community Memorial Foundation
Discover Financial Services
Global Charitable Fund
Greer Foundation
IMC Chicago Charitable Foundation
Julius Frankel Foundation
Lyon Family Foundation
Marc and Jeanne Malnati Family Foundation
Richard & Martha Melman Foundation
The Northern Trust Foundation
Paul M. Angell Family Foundation
Reade Industrial Fund
Sidley Austin, LLP
Westside Justice Center

\$25,000 to \$49,999
AAA-ICDR Foundation
Aileen S. Andrew Foundation
Baxter International Foundation
Alfred Bersted Foundation
Carye & Abraham S. Hart Fund
Casten Family Foundation
Chicago Foundation For Women
ComEd, An Exelon Company
Community Lifeline
Dean L. and Rosemarie Buntrack Foundation
The Duchossois Family Foundation
Illinois Children’s Healthcare Foundation
The James Family Fund
Masonic Family Health Foundation, Inc.
McDermott Will & Emery
Mesirow
Nurse-Family Partnership
PNC Bank
PNC Foundation
Linda & Richard Price Family Fund
Prince Charitable Trusts
ULTA Beauty
Willkie Farr & Gallagher LLP
Wintrust Financial Group

\$10,000 to \$24,999
Afterschool Alliance
The Allstate Foundation
Aon Foundation
Barclay Damon, LLP
BDT Capital Partners, LLC
Blowitz-Ridgeway Foundation
Bradshaw Family Foundation
The Builders Initiative
Burke, Warren, MacKay & Serritella, P.C.
Chicago White Sox Charities
Children’s Home & Aid Society
Dr. Scholl Foundation
Duane Morris LLP
The Duchossois Group, Inc.
Fifth Third Chicagoland Foundation
First Midwest Bank
Gerald A. & Karen A. Kolschowsky Foundation, Inc.
Glen Ellyn Women’s Club
Goldman, Sachs & Co.
Illinois Tool Works Foundation
Jenner & Block LLP
Katten Muchin Rosenman LLP
Latham & Watkins LLP
Max Goldenberg Foundation
Mayer Brown LLP
The John A. Miller Family Foundation
Molson Coors
Morgan, Lewis & Bockius, LLP
Oberweis Asset Management and The Oberweis Funds
Pelino Charitable Organization
Perkins Coie Foundation

Polsinelli
The Redemption Church
The TJX Foundation, Inc.
Winston & Strawn LLP
YWCA Metropolitan Chicago

\$5,000 to \$9,999
Bargains In A Box
Berkeley Research Group
Walter J. & Edith E. Best Foundation
Boston Consulting Group
Jeff and Erica Canzona Family Fund
Charles River Associates
d’Escoto Inc.
DuPage Foundation
MFS DuPage League
Exelon
Fidelity Corporate Services
Foley & Lardner LLP
Glen Ellyn Infant Welfare
Goldman Ismail Tomaselli
Brennan & Baum LLP
Grand Victoria Foundation
Greenberg Traurig LLP
Holy Apostles Philoptochos Society
Jack and Jill Foundation
Jay Johnson Charitable Trust
Jewish Federation of Metropolitan Chicago
Leftrue Entertainment You Enterprises, Inc.
Meijer
Mulholland Family Donor-Advised Fund
Naffah Family Charitable Foundation
Naperville Junior Woman’s Club
The Network: Advocating Against Domestic Violence
Nicor Gas
Pugi of Chicagoland
Rathje Woodward, LLC
Naperville Sunrise Foundation
Stepcoe & Johnson LLP
Stifel | The Knall/Cohen/Pence Group
Swanson, Martin and Bell, LLP
Ulta Beauty Charitable Foundation
Village Treasure House
West Monroe Partners

\$2,500 to \$4,999
Ball Horticultural Company
Bella Cosa Jewelers
Benedictine University
BKD Foundation
Castle Chevrolet
Caton Commercial Real Estate
JBSC, Inc.
CDM Foundation
Cresco Labs, LLC
Crowe LLP
DLA Piper Rudnick Gray Cary US LLP
FlexPrint, Inc.
Hughes Socol Piers Resnick & Dym, Ltd.
IBM Employee Services Center
Ice Miller LLP
Linden Oaks Behavioral Health
Richard James McCann Foundation
NPL Construction Co.
Pipe Strong, LLC
ReedSmith, LLP
Shepard Medical Products
Soroptimist International of Suburban Chicago
St. Mark’s Episcopal Church
St. Philip Lutheran Church
St. Procopius Abbey
TD Ameritrade Clearing
Valley View Community Unit School District 365U
Vantage Point Financial
Vermeer Midwest
Wheaton Rotary
YourCause, LLC

\$1,000 to \$2,499
Abbott Laboratories
The Alliance of Downtown Glen Ellyn
AmazonSmile Foundation
Benevity Community Impact Fund
BMO Harris Bank
The Boston Consulting Group
Chicago Southwest Suburban Chi Omega Alumnae Association
College of DuPage
Community Presbyterian
Covenant Faith Church of God
DuPage County Bar Foundation
Faithful Circle Quilters
Fidelity Brokerage Services LLC
Fidelity Charitable Gift Fund
First Congregational Church of Wilmette
Friends of the West Chicago Parks
Gibson, Dunn & Crutcher LLP
Gloria Dei Lutheran Church
The Grove Foundation
Koch Companies Community Fund
McDonalds Corporation
mpsqaredsubs
Naperville Noon Lions Foundation
Nuveen Investments, Inc.
Phoenix Closures, Inc.
Polaris
The Regan Family Foundation
Rotary Club of Skokie Valley Foundation
Schwab Charitable Fund
Southminster Presbyterian Church
St. Luke Presbyterian Church
St. Peter’s United Church of Christ
Liane K. Williams Insurance Agency Inc
United Way of Metropolitan Chicago
Unity in Naperville
USLI Inc
Vanguard Charitable
Wayne Township
Weiss-Read Charitable Fund
WePay
Yorkfield Presbyterian Church
Zonta Foundation of Greater Chicago

\$500 to \$999
3P Utility Services
Allstate Foundation
Axion RMS, Ltd
Baird & Warner Good Will Network
Baird Foundation, Inc.
The Benevity Community Impact Fund
Bloomingdale Lions Club
CAF of America
Consolidated High School District 230
The Downers Grove Junior Woman’s Club
Fennell Electric, Inc.
Fred Astaire Dance Studio
Frisoni Family Foundation
Google Matching Gifts Program
Grace United Methodist Church
Groebeiner & Associates, Inc.
Helen and Joseph Komarek Foundation
Lord of Life Lutheran Church
Lydia Home Association
Midwestern University
Northminster Presbyterian Church
Pinof’s Palette
Redbox
Riteway-Huggins Construction, Inc.
Riveredge Hospital
Schmitts Landscape
SS. Peter and Paul
Taylor & Malone Management, Inc.

United Way of Greater Atlanta
United Way of Greater St. Louis
V3 Companies, Ltd
Valley View Public Schools
Verizon Foundation
Village of Lombard Public Works
Wheaton Sport Center
Women’s Club Darien
Rotary Club of Woodridge
YouGiveGoods
Zurich American Insurance Co.

\$250 to \$499
Driscoll Law Group
DuPage Credit Union
DuPage Tumble and Cheer
Escalent
Farmstead Womens Club
Fifth Third Bank Gives - United Way
First Midwest Bank Gives - United Way
The First United Methodist Church of Glen Ellyn
KPMG Gives - United Way
National Council of Jewish Women
Prairie Path Books
RJM Strategy Group, LLC
St. Paul’s United Church of Christ
United Way Suncoast
Varney Family Foundation
Villa Park Currency Exchange
Wells Fargo Bank, N.A.
Whiskey Acres

\$100 to \$249
Accenture
Axielrad Family Fund
Briarcliffe Lakes Neighbors Club
Casey’s Foods
Century VFW Auxiliary 503
Clark Construction Group
Community & Economic Development Association of Cook County
Conagra
Dagmar Lodge 4
Dayton Foundation
Exelon Foundation
Fire + Wine
Fox Valley Junior Women’s Club
Gallop Family Foundation
Global Charitable Fund
Hartgrove Hospital
Henry Crown and Company
The Hire Solution Employment Corp
Illinois Philharmonic Orchestra
Improv
ITW Gives - United Way
Kendra Scott
The Ladies of the Elks, Lodge #1531
LPL Financial
Mondelez International Foundation
Network for Good
Nivert-Glenn Fidelity Charitable
Northern Trust - United Way
NTEGRIBOX Solutions Limited LLC
Pates Heights Woman’s Club
Peoples Gas UW - Anonymous
Prince of Peace Lutheran Church
Prinova Gives - United Way
RedSky Technology
Rotary District 6440 Charitable Fund Inc.
Southern Charm Venues, Inc
Saint Michael’s United Church of Christ
St. Peter and St. Paul Lutheran Church
Target
United Way Of Southwestern Pennsylvania
United Way of the Midlands
Village Links Glen Ellyn
Wheaton Meat Company
Winfield Education Foundation
York Township Republican Women’s Organization

INDIVIDUAL DONORS

\$100,000 to \$999,999
Anonymous
Janet and Craig Duchossois
Tony and Susan Hunter and Family
Mr. and Mrs. Michael Keiser
Donor Advised Fund
Mark and Christiane Ladd

\$50,000 to \$99,999
Mr. and Mrs. Michael and Ashley Joyce
Ms. Barbara Rapp
Ms. Eileen P. Scudder

\$25,000 to \$49,999
Anonymous
Hall and Kathleen Adams
Maree G. Bullock
Rob and Darden Carr
Ms. Jennifer Comparoni and Mr. Matthew Bernstein
Annie and Kevin Delano
Mr. and Mrs. C. Gary and Virginia Gerst
Brenda and James McNamara
Mr. and Mrs. Steve and Linda Patton
Ms. Deb Stephen
Matthew and Marny Zimmer

\$10,000 to \$24,999
Anonymous
Mr. and Mrs. Erik D. Barefield
Michael G. Busse
Christopher L. Cooney
Mr. and Mrs. Marcus L. Cooper
John and Emily Costigan
Ms. Martha Delgado and Mr. Saumya Nandi
Jason Dubinsky
Dr. Paul Eccher
Steven and Anne Gilford
Daron and Micah Hines
Mr. and Mrs. Roger Hochschild
Pat and Jenny Kernan
Mr. John V.M. McClure
Jim and Linda McDonald
Martha and Richard Melman
Cynthia Patton & Patrick Robinson Charitable Fund
Virginia J. Pillman
Mr. and Mrs. Scott W. Simmons
Mr. and Mrs. D. Gray and Kecia Steelman
Michael and Lori Vardas

\$5,000 to \$9,999
Ms. Amanda S. Amert
James and Valerie Carroll
Dordena Clink
Dan and Ellen Coman
Mr. Robert J. Contino
Niki Cousino
Mr. Peter D. Crist
Tanya and Stephen Davis
Ms. Kimberly T. Duchossois
Mr. Gary M. Elden
Ric Estrada and Beatriz Ponce de Leon
Mr. and Mrs. Edward A. Fortino
The Hassan Charitable Trust
Carolyn and David Healy
Mr. and Mrs. R.Thomas Howell, Jr.
Mr. and Mrs. Denis O. Hurley
W.Kirk James
Mr. John A. Krallmann
Kimberly Leidolf
Mr. and Mrs. Lawrence F. Levy
Mr. Bruce A. Marcus
Sean Martin
Ms. Diana Palomar
Mr. and Mrs. Alex Pearsall
Marcie and Mark Peterson
Mr. and Mrs. Richard Price
Paul and Robin Pycik
Matthew Renaud
Mr. Allen A. Rodriguez and Olinda L. Lemus and Family
Ms. Kathleen K. Rummel
Glyn and Marleen Skerrett
Scott and Michelle Solberg
Donna, David, and Julia Tropp
Daniel and Katie Walsh
Brian and Peggy White
Patrick Whiteside
Christine and Tom Wood

\$2,500 to \$4,999
Patricia A. Alstrin
Graham Brisben
Jeffrey and Debra Bruns
Jennifer Cello

Linton J. Childs
Sara and Roger Clark
Mrs. Sharon R. D’Alessandro
Mr.Thad Davis
Ms. Jessica Dunne and Mr. Brian Reshefsky
Thomas Feldstein
Albert and Suzanne Friedman
Mr. and Mrs. David P. Glatz
Christy L. Harris
Mr. Wallace W. Harris, Jr.
R.J Hutton
Steve and Jan Junk
Nancy and Willis King, Jr.
Mr. and Mrs. James and Maryellen T. Kiang
Mr. and Mrs. Jerome Krulewitch
Max and Julie Leichman
Anne Leventry and Kenneth Jeffers
Mr. and Mrs. Michael G. Lombard
Mr. and Mrs. Ross W. Manire
Dwight Marroquin
Mr. and Mrs. Glenn M. Mazade
Dan and Ellen McGowan
Ms. Katie McMillan
Deborah and John Muller
Judith and Michael Nigro
Susan April and Bob Rinder
Mr. Lewis Rosenbloom
Mr. and Mrs. Bryan P. Rozum
Audrey and Leonard Rubin
Mr. Daniel Sandlin
Mr. and Mrs. David M. Schiffman
Mr. Terence J. Taylor
Ben Wadlington
Debbie K. Wright

\$1,000 to \$2,499
Arjun Ahluwalia
Laszlo Babai
Sheila and Robert Bator
Glenn and Janet Becker
Jeffrey and Deborah Bilek
Richard Blomaquist
William Blomaquist
Carrie and Brian Blonigen
Ms. Therese M. Bobek and Mr. Jeffrey L. Bobek
Mr. and Mrs. Erica and Erik Borggren
Jeremy Bower
Andrea Bucklar
Jennifer Burgman
Hon. and Mrs. Michael J. Burke
Erica and Jeff Canzona
Ms. Maria Carmen Gonzalez-Djangi
Julie Chavez
Mr. Robert Chicoine
Mark Clemens
Bruce and Marjorie Collette
Noah Craft
Chris and Maureen Dabovich
Ms. Kathleen Danakis
Dan DeVos
Eileen and Jeffrey Duffy
Mr. Jason Eliason
Robert and Suzanne Ellis
Jorge and Madonna Farr-Aguilar
Janet and Keith Farral
Ms. Kelly A. Fetzer
Ann and Dennis FitzSimons
Raymond and Karen Foertsch
Ms. Jody A. Gauthier
Robert and Carrie Gibson
Mr. David F. Graham
Mr. and Mrs. Stephen and Eleni Griesemer
Ms. Kyle L. Harvey
Michael and Theresa Hawley
Katherine Hazelwood
Mr. William D. Heinz
Kathleen Heller
Lee Henderson
Kathy Herbert
Mr. and Mrs. Thomas Hutchinson
Mr.Thomas F. Hynes and Ms. Carol Jones
Guy and Jean Johnson
Mr. Roger K. Johnson
Lori H. Jones
Colleen and Jim Jones
Robert and Karol Karlblom
Luke Karsten
Mr. Michael C. Kasdin
Mr. and Mrs. Jeffrey A. Kastelic
Barbara Keenan
Corey and Lori Kilkelly
Mr. Daniel G. Kozera
Karen and Kenneth Kuchar
Marjory Lewe-Brady
Karen and Robert Lewis
Diane and Alejandro Longoria

Richard C. Lotz
Steven Luse
Mr. Larry W. Martin
Kathy and Mark McCarville
Mrs. Marilyn McCoy
Linda McDonald
Mary Beth and Hugh McLean
James and Peggy McSherry
Mike Miller
Kimberly Mills
Margaret Naylor
Theresa and Thomas Nihill
Susan Nuetzel
Matthew Organ
Emily Ory
Katie and Bill Planek
Lauren and William Plasschaert
Ms. Carol C. Platt
Mr. Jeffrey R. Platt
Ms. Rita M. Alliss Powers
Mr. John C. Raffetto
Jacob Rassner
Mike Reese
Mr. Robert J. Regan and Ms. Cynthia S. Clark
Brooks and Jan Reid
Mr. Aaron Rice
Mr. and Mrs. John M. Richardson
Mr. Michael P. Roche
Kathryn Rozum
Mr. and Mrs. Ethan Samson
Mr. and Mrs. Joseph M. Scandariato, Jr.
Linda Scheiber
Lisa Schenkman
Mr. Michael D. Schnur and Ms. Janice J. Liten
Mr. and Mrs. Garrett P. Shumway
Emily Shupe
Mr. and Mrs. Michael Skarr
Mr. Douglas S. Stevens
Dave Thomas IV
Mr. and Mrs. James K. Toohey
Paul and Mary Ann Travers
Mr. and Mrs. Anton R. Valukas
Mr. and Mrs. Jared Vegosen
Kamiar Vossoughi
Mr. Peter Waldman, Sr
The Honorable Bonnie M. Wheaton
Carole Wiesbrook
Mr. and Mrs. John B. Williams
Mr. Christopher Wilmes
Ms. Leslie C. Wilson
Jamie H. Yeater
Mr. and Mrs. Robert Yohanan

\$500 to \$999
Mr. Bill M. Albin and Ms. Julie K. Albin
Mr. and Mrs. Haven and Mackenzie Allen
Gabby Alonso-Carmona
Carol and Larry Althoff
Mr. Patrick G. Anderson, Jr.
Darrin and Denise Bacon
Eric Baetz and Nicole Lambros
David Bahde
Ms. Tianne Bataille
Jennifer Bean
Robert and Cathleen Beecroft
Patricia and John Bomher
Jean Butzen
Mrs. N. Byrne
Mr. and Mrs. Thomas J. Carmody
Mr. and Mrs. James Carter
Mr. Brian R. Chmiel
Rashmi Chugh
Alice M. Clark
Julia and Robert Cloud
Mara Cooney
Timothy and Marley Crane
Michael Cronin
Robert and Isabel Curley
Thomas Currey
John and Pamela Dalby
Vivian di Nardo-Dvoracek and Jacob Dvoracek
Heather Eddy Kisner and Remo Kistner
Allen and Susan Ekkebus
Christine Erickson
Linda Fairlamb
Anne and Andy Ford
Mr. and Mrs. Karl Frey
Mr. Terry and Mrs. Angela Frye
Mrs. Nancy Garcia
Michael Gavin
Herb and Susan Getz
Kristine M. Givens
Mr. Mike Graf
Zane Grube
Amy Hall
James Hilgenbrink

Joseph Hoffman
Tiffany Hopkins
E. Mitchell Hopper
Judy Huizinga
Mr. and Mrs. Robert Hutchinson
Kathryn Jabek
Steve Allen James
Mr. and Mrs. John C. Jenkins
Dr. Jaclyn Jensen and Eric Jensen
Victoria Johnson
Donald W. Joy
Mr. Daniel J. Kach
Chantal Kazay
John and Annalee Keda
Ms. Laura Kofoid and Mr. David Ricci
Marian and Larry Krupicka
Alfred and Dorothy Kugel
Amanda Kumm
Ruby and Chester Larkin
Bob and Noreen Lassandrello
William and Elizabeth Lisy
Philene Lortz
Sarah Mackin
Mr. Terence Mahoney
Jibrán Malik
Peter Mancini
Dean Maragos
Marilyn and George Marchetti
Bill Mariani
Mr. Andrew M. Masse
Aleck Matambo
Michael and Mary Ellen Mazza
Kevin and Lisa McCarthy
Maureen McGinnis
Jackie E. McLaughlin and Ted Cornell
Ted amd Katherine McNabola
Paul Metz
Mark Miller
Linda and Jeff Moe
Daniel and Eileen Moll
Denny and Martha Moore
Mr. Walt Morris
Tom Mosillo
Ken Muenz
Mrs. Mary A. Murray-Martin
Judy Nahumyk
Marjorie and Wallace Natchke
Berta Nekraschenko
Todd Niemiec
Barbara and James Norem
Mr. and Mrs. Peyton H. Owen, Jr.
Mr. Brian Paladie
Bonnie Park
Dr. Bob Parsons, M.D. and Mrs. Elise Parsons
Mr. and Mrs. Kenneth V. Perkins
Rebecca Perry
Mr. and Mrs. Jim Porter
James N. and Gail J. Raffel
Daniel Raichel
Clifford Rhyme
Michael Ritter
Leticia Robles
Dr. George Leo Rodgers
Alicia Rose
Ms. Maya B. Rosenbloom
Kristen Sanders
Dawn M. Scarborough
John and Pat Schmitt
James and Pam Sharar-Stoppel
Mr. David Sherman
Brian Shevitz
Eric and Elyssa Siegel
Ms. Elizabeth L. Snyder
Sarah and Philip Stamatakos
Margaret Stone
Erich Struckmeyer
Joseph D. Szczepaniak
Jenny Tank
Jane Taylor
Francois Teissonniere
Rene Y. Thompson
Martin Tully
Joyce and Donald Ursin
Peter Van Nortwick
Judith Vierke
Kathryn Vorisek
Tracy Vuolo
Darin Wagner
Peter Wallin
Leslie Wasserman
Stephen Webster
Mr. and Ms. Michael Werner
Liane and Eric Williams

\$250 to \$499
Betsy and John A. Andersen
Ms. Emilia Arellano
April and Richard Arnold
Falan Austin
Robert and Priscilla Baker

Mr. James Baldwin
Cynthia Baranowski
Doug Barker
Joe Bechthold
Nichole Benolken
Debbie Berman
Chris and Joan Bowers
Joan Brady
Lauren Brdecka
Laural Briggs
Lawrence Brown
Tim Burge
Jeanne and Joseph Cappello
Rod Capiello
Christ The Servant Catholic Church
Norm Chimenti
Frank and Vera Clark
Dr. Sonya Clifford and Dr. Brad Clifford
Meg and Brian Cooper
Stephen and Kara Cummings
Mr. and Mrs. David Deloof
Reshma Dhake
David Doerr
Rachel Z. Doucet
Robert Doyle III
Laurie Draut
Christopher Farr
Sonja and Todd Faulkner
Daniel Finn
Marina and Mark Fleytlikh
Margaret Folga
William Forsyth
Claudia Freed
Steve and Joan Fuesting
Larry and Diane Galek
Rachel Garthe
Gerald and Sharon Gartner
Susan Gasper
Mr. and Mrs. James V. Gilliam
Mr. and Mrs. James J. Glasser
Ms. Mary Beth Glenn
Charles and Phyllis Goodman
Hannah Gunter
Edward and Mary Kay Haben
Mr. Brian T. Hanson and Ms. Karen J. Alter-Hanson
Hilary Harris
Schnefta Harris
Sherry Hart
Mr. Ryan S. Hedges
Sue P. Heineman
Sue and Roger Hendrickson
Mark E. Hetherington
Betsy Hinsch
Nancy Hoekstra
Ms. Kristy Honiotes
Chris Humbert
Anthony Juozapavich
Eric and Jeanne Kamrath
Mr. and Mrs. Eric Kaplan
Alexia Katsaros
Miguel C. Keberlein Gutiérrez
April Kightlighter
Paul Kniep
Dr. Ollie M. Knight
Sarah Krauszer
Jerry Krulewitch
Aaron Kuhn
Michael Kurtzon
Adam Levine
Mr. Andreas Liewald
Mr. Roy A. Lindley
Harriett Lindstrom
Michael Mach
Mary Mallon
Mr. and Mrs. Eugene D. Malloy
Joyce Marsch
Mr. and Ms. Vanda Marsh
Patricia and Robert Mathis
John M. McCleary
Gail McEnroe
Mr. and Mrs. Dave McGowan
Jackie McGrath
Mr. and Mrs. Ronald A. Melman
Rosanne Merrill
Steven Mesirow
LaKeeta Mickens
Rob Milburn and Amy Morton
William and Patricia Minihan
Daniel Moll and Eileen Moll
John and Val Nagy
Marina Natsis
Laura and Chris Newbury
Diana and David Newby
Joel Neymark
Ms. Janie Oldfield
Judi Beth Weaver Olseng
Dr. Sarah Oppenheimer
Mr. and Mrs. Mark Osgood
Constance Palos
Ms. Constance Pecover

Phyllis Pepiot
Mrs. Mary Perona and Mr. Dale Perona
Jennifer Pope
Wendy Puglielli
Frank Pyrcik
Mr. and Mrs. David Rendall
Mrs. Sophia Ruffolo
Mr. Scott Rusch
Nicholas and Teresa Ryan
Marc Sacks
Joyce Saricks
Liza Schramm
Mr. and Mrs. Daniel N. Schuchardt
Claudine Sharko
Patrick and Francesca Skarr
Sharde Snyder
Robin Starnes
Mr. and Mrs. John Stitzell
Delores Strassen
Cassandra Taylor
Ms. Pamela Taylor
Leslie Tiongo
William Treasurer
David and Susan Voss
Ann Celine Walsh
Mr. and Mrs. William J. Wash
Cheryl A. Wash
Rachel Watson
Beth Weiss
Kevin Willoughby
Ms. Barbara Winkelman
Adam and Iaria Woodward

\$100 to \$249

Gwen C. Adams
Christopher Alberici
Mike Aleshire
Simone Aloisio
Jose Aloisio
Sonya Anderson
Ida and Thomas Anger
Michael Annin
Michael and Helen Arkes
Jim and Pauline Ashbaugh
Courtney Ashley
Sheila and Phillip Aszling
Mrs. Sanya Badr
Kenneth Bakari
Kevin Baker
Mr. and Mrs. David Ban
Roger and Michele Bancroft
Sarah F. Barber
Daniel Barlow
Margaret Bartlett and Gary Bartlett
Lavanya Batchu
Marcin Bednarczyk
Lance Bell
Linnea A. Berg
Robert and Carolyn Berlin
Marla Bernard
Linda Bevol
Jason Bianchi
Gregory and Nancy Bielawski
Mr. and Mrs. Joseph E. Birckett
Dennis and Nancy Bishop
Benjamin Blakney
William J. Bleecker
Ryan Block
Paul Blumberg
Arianne and Travis Bonifas
Betty Bosmeny
John Bouman
Chester Brodnicki
Natalie Brown
Kim Bryan
Vaughn D. Bryant
Karen Bucher
Kevin Buckle
Joshua Burden
Mary and Earl Bybee
Ms. Nicole Cameron
Penni and Chris Cannova
Mary Ann Carignan
Josette Carmona
Rebecca Carriere
Joseph and Cynthia Cervone
Mary Jane Chapman
Mr. and Mrs. Ralph Chor, Jr.
Jamie Cnota
Mr. and Mrs. John J. Coffey, III
David Cohen
Gary Cohen
Don and Joanne Colby
Jane Cole
Marilou Colfax
Abbey Combest
Carey Cooper and Cheryl Kraf-
Cooper, M.D.
Julia Corby
Mr. Patrick John Cotter
Marilyn Cuber

Bill Curry and Gretchen Fleming
Ms. Tracy Daujotas
Bradley Davis
Robert DeBolt
Ariel dela Cruz
David Dermenjian
Lauren O. DeSimone
James DeZellar
William and Dixie Diedrichs
Janet Diehl
John Dillon
Gary and Ruth Dispensa
Bill Doyle
Mr. and Mrs. L. Alan Drake
Mrs. Ann Driscoll and Mr. James Driscoll
Mary Ellen and Rob Durbin
Deborah and Scott Early
Yazid Ebeid
Karin Charles Edwards
Mr. Michael Eggert
Susan and Kenneth Ekins
Brian Ekkebus
Ms. Barbara Elison and Rev. Frank C. Baldwin
Kelly Erickson
Jennifer Erwin
Ms. Catherine Eslinger
Cara Esser
Ms. Amanda Ethier
Jennifer Fabri
Asif Fakroddin
Ryan Fedorovich
Lynne Feeney
Gary and Marla Felsten
Miriam Ferguson
Sam Fishkin
Mrs. and Mr. Elinor D. Flanigan
Heidi and Stephen Ford
Charles Foster
John B. Foster and Judy Foster-Meyer
Sandra Freeburg
Rhonda and Barry Friedman
Roger Garvert
Adam Goldman
Joanne Gomez
Jennifer Gonzalez
Thomas and Susan Grabowski
Ms. Amanda M. Graveline
Lauren Greenebaum
Catherine Groninger
Teny O. Gross
Irasema Guerrero
Kim Gunaka
Kelly Gunn
Raj Gupta
Michael Gurgone
Richard and Deborah Hall-Reppen
Leo Harmon
Mr. and Mrs. Jeff Harris
David Hart
William and Nadine Harris-Clark
Carin Hawkins
Andrew Heckman
Chris Heim
Gwendolyn and Chester Henry
Mr. and Mrs. Robert Hesterman
Carissa Hider
Mr. and Mrs. Norman M. Hirsch
Suzanne Hofke
Mr. and Mrs. James P. Hofner
Lyndi Hofstra
Kevin Hogan
Kevin Holland
Mary Kay and Peter Holmes
John Holsinger
Rose Ann Hoof
Deborah Hopkinson
Sarah Horowitz
Patrick Hunt
Pat Hurdle
David Israel
Eric Jacobsohn
Stephen Jacobson
Joanne Jagusch
Sonja Jajic
Ms. Karen Jaris
Shahram Javidan
Bill and Susan Jennrich
Robert and Mary Johannigman
William Johnesee
Kim Johnson
Mr. and Mrs. Donald V. Johnson
Susan and Donald Johnston
Ned Johnston
David Jones
Kelly Johnstone
Jeffrey Kafitz
Tina and Michael Kanis
Mariellen Karstens
Jesse Keig

Brandon Kerndt
Orysia Killion
Mr. David Kimball and Mrs. Lisa Kimball
Jack & Denise Karhoff King
Stephen Kozich
Leigh Kramer
Todd Krzyskowski
Barbara Krzystofiak
Karen Kuhn
Johna Lacey
Sarah Lamson
Mr. John Langton
Rita Latnhotha
Mr. and Mrs. William J. Lawlor III
Marc Leibson
Kathryn Lemmon
Ms. Mary Leo
Ken Levin
Gerald Levin
Jennifer Levin
Ran Li
Celine Lillie
Kristine Liskey
Jennifer Lockbaum
Dr. Kimberly Lohse
Brian Lorber
Mr. William Lutz
Sharon Maloney
Peter Manzi
Stanley and Margaret Matkovich
John Maunsell
Patrick and Mary Mauro
Mort and Sharon Mazaheri
Ms. Linda McCarthy
Ryan McCreery
Michael McDaniel
Betsy and Mark McKelvey
Ms. Elinor G. McMaster
Georgann McNamara
Mark McNeela
Paul Meier
Karina Mercedes Morales
Ming Mesissonnier
Ilona Mestrl
Scott Metzger
Jonathan A. Meyer
Karen Michalczyk
Thomas and Teresa Miller
Amy Milligan
Curt Mitchell
Andrew Minkus
Frank Mikael Mleko
Francine Modelski
Saraj and Shreelekha Mohanty
Mr. Frank Molinaro
Lynne Monticello
David Moore
Tara Moore
Cecilia Moy
John Nelson
Scott R. Nelson
Barry Netzky
Christina Noellsch
Timothy and Elaine Nordahl
Hayley North
Linda O'Leary
Matthew Olsen
Richard and Carol Olsen
Mr. and Mrs. John J. Olvany
Sarah O'Neill
Gia Oroni
Lucy P.
Norma Pagan
Thomas Panoplos
Stephen M. Parlier
Gregory Pec
Liz Pedota
Frances Perez
Erick N. Perez
Ms. Maria Perez
Richard and Mary Persing
Steven F. Pfau and Julie S. Rand
James and Katie Philpott
Kristina Pierce
Mr. and Mrs. William Poirier
Patricia Poleski
Anna M. Polizzotto and Jennie M. Polizzotto
Nicolette Pollard
Nicholas Pontikes
Thomas G. Potter
Elizabeth Prete
Kevin Price
Brian Price
Paula Pyrcik
Kathy and James Raker
Mark Ramljak
Julie Rand
Ms. Kendra Reinshagen and Mr. Stephen Aultz
Seth Rich
Claire Richter

Kathaleen and Ernest Ricketts
Christine Riedl
Servia Rindfleish
Sean Robertson
Mr. Bernard Rocca
Mrs. Mary Ann Roeser and Mr. Richard Roeser
Ann Rojas
Jennifer Rosenblum
Benjamin Rovegno
Nathaniel Sager
Mr. and Mrs. Charles Saltzman
Kris Samiec
Anne and Mostafa Samsami-Mohajer
Joseph Scanlon
Mr. and Mrs. Nate F. Scarpelli
Mr. Brian T. Schneider
Adam Schowengerdt
Stacey Schram
Renee Schreiber
Tom Schroeder
Michael T. Schulte
Susan Schumacher
Leanne Schuneman
Mr. Steve Schuster
Patricia and John Seale
Joyce Segraves
Kathleen Seitz
Deborah Serritella
Rachel Servatius
Anthony Severino
Gary and Sheryl Sgarbossa
KeTan Shah
Ms. Alfreda Shapere an Mr. William A. Bailey
Thomas S. Sharp
Charles Shaw
Jill and Kenneth Shiner
Rebecca Shane
Dr. and Mrs. Kenneth Siegel
Mr. Matthew Skarr
Holly and Rick Sloan
Brian Smith-Perry
Jaclyn Sorci
Jose Soto
George and Sally Sotos
Robert and Julie Soule
Lisa Sprovieri
Valerie B. Stahl
Terrie Stainman
Karen Steinke
John Steman Jr.
Nancy Stern
Mark and Susan Stewart-Racicot
Stephen Stober
Andrzej Stukin
Dennis and Joyce Sullivan
Ryan Surratt
Mr. and Mrs. William Swedler
Taylor Swiderski
Mr. Steve Swierczewski
Joan Swigon
Robert Sydow
Mary Taii
Mr. and Mrs. Jonathan Talbert
Wenli Tan
Jason Taylor
Pamela L. Terrell
Mr. Fassa A. Thiel
David Thomforde
Michele Thompson
Kenneth and Glenna Thompson
The Honorable Elizabeth B. Tisdahl
Jennifer Tagnocchi
Hazel Troost
Jessica Underwood
Kay Van Vreede
Lisa VanArsdale
Mr. and Mrs. Christopher Walvoord
Carol and Norman Wandke
Jessie Weaver
Richard H. Weigel
Mrs. Patricia and Mr. Michael B. Weinstein
Eugene Weissberger
Ms. Shirley Wells
Theresa A. Whalen
Aaron Wham
Pamela Whittles
Marilyn and Marv Wigder
Daniel Wilde
Michael and Barbara Willis
Joseph Willuweit
Frances Willuweit
Kay B. Wilson
Debbie Wittig
Ms. Joan C. Wozniak
Ronald M. Wynne
Paulette K. Yetter and Paula M. Grubben

Christopher Yike
Mr. and Mrs. John Young
Christopher and Margaret Zarcone
Roger and Agnes Zellers
Mr. and Mrs. Stephen Dirk Zink
Mark Zivin and Margie Zivin
Andrea Zwit

MATCHING GIFTS

Abbott Laboratories
Allstate Foundation
AT&T
Avanade
Baird & Warner Good Will Network
Baird Foundation, Inc.
Bank of America Matching Gifts
The Boston Consulting Group
Change Healthcare
CommScope, Inc.
Costco Wholesale
Discover Financial Services
EcoLab
Goldman, Sachs & Co.
Google Matching Gifts Program
Henry Crown and Company
Nancy King
McDonald's Corporation
Motorola Solutions Foundation
Polk Bros. Foundation
Relativity
UGH
United Health Group
Verizon Foundation
William Blair & Company

IN HONOR OF

John A. Andersen, in honor of Bart Rocca
Arianne Bonifas, in honor of Pete Groninger
Chris A. Bowers, in honor of Roger Johnson
Clark Construction Group
On behalf of their employee Claire Kozlowski
Noah Craft, in honor of Martha Melman
Rita Gazdziaik, in honor of Tim Kuntz
D.A. Graves, in honor of Susan Riley
Catherine Groninger, in honor of Pete Groninger
Amanda Groves, in honor of Nancy Reich
Zane Grube, in honor of Kristine Givens
Kiersten Hoiland, in honor of Jeanne Marcus
Larry W. Martin, in appreciation of Norma Pagan
Nitor Gas Board Service, Recognition in honor of Pat Whiteside
PNC Bank, in honor of former BBVA USA Advisory Board Members David L. Althoff, Justin O Kay, Michael Delrahim
Nicholas Reiland, in honor of Eric Siegler
Alicia Rose, in honor of Julia Cloud and our great Deloitte colleagues in our center of excellence
Bradley Schmarak, in honor of Seth Hemming
John Schmitt, in honor of Mike Skarr
Stacey Schram, in honor of Steve Minnich
Eric M. Siegel, due to the hard work of Erik Barefield
Nancy Stern, in honor of Kristofer Swanson
Maxine A. Tropp, in honor of Mrs. Robert Newbury and Family
Lisa VanArsdale, in honor of Kristy Whitaker
Theresa A. Whalen, in honor of Michael Foradas
The John Whitney Charitable Account, in honor of Garry Nelson and Donna Sable
David and Andrea B. Yelin
Philanthropic Fund, in honor of David Tropp's service as a Board Member
Zurich American Insurance Co., in honor of Lisa Leftwich as a 2021 KAMP Leadership Award recipient

IN MEMORIAM

Michael Arkes, in memory of Richard Duchossois
Sheila Aszling, in memory of Sam Samsami
Jeanne Cappello, in memory of Daniel Cappello
Don Colby, in memory of Robert, Bette, Leslie, and Mildred Mickelson
Diane Colley, in memory of Elizabeth Ruff
Dan DeVos, in memory of Patricia "Patti" Menconi
Yazid Ebeid, in memory of Mustafa Samsami
Anthony Ekkebus, in memory of Ann Ekkebus
Brian Ekkebus, in memory of Ann Ekkebus
Allen Ekkebus, in memory of Ann Ekkebus
Susan Ekkebus, in memory of Ann Ekkebus
Margaret Folga, in memory of Ann Ekkebus
Carloa Goncalves, in memory of Ana Maria Arellano
Patrick Hamilton, in memory of Patti Menconi
Carrye & Abraham S. Hart Fund, in memory of Mrs. and Mr. Max Hart
Sherry King, in memory of Elizabeth "Betty" Ruff
Dean Maragos, in memory of Patti Menconi
Mort Mazaheri, in memory of Sam Samsami
Richard & Martha Melman Foundation, in memory of Robert Gould
MFS DuPage League, in memory of Scott Kenton
MFS DuPage League, in memory of Irwin Berkun
MFS DuPage League, in memory of Sam Samsami
MFS DuPage League, in memory of Carol Drahozal
Anna Polizzotto, in memory of Ann Ekkebus
Nicolette Pollard, in memory of Angela Mittal
Kathleen Rush, in memory of Patti Menconi
Nate F. Scarpelli, in memory of Sam Samsami
Michael D. Schnur, in memory of Eugene Frett
Stacy Shediv, in memory of Gary Menconi
Susan Stiles-Randak, in memory of Sam Samsami
Maxine A. Tropp, in memory of Renee Gail Pasikov
David Twardosky, in memory of Gary Menconi
Jen Van Valkenburg, in memory of Ana Maria Arellano
David Voss, in memory of Ann Ekkebus
Vanessa Wilson, in memory of Dorothy Harris
Michele Zurakowski, in memory of Dorothy Harris

GIFTS IN KIND

Anonymous
Faiz Ahmed
Gabby Alonso-Carmona
Patricia A. Alstrin
Carol Anderson
Judy Anderson
Monisha Anthony

Rocky Avello
Bonnie Balboa
Jasmine Banks
Bargains In A Box
Teri Barkdoll
Dan Barker
Maryann Basista
Pam Blanchard
Gail Block
Elizabeth Ann Booton
Sandy Borkovich
Joan Brady
Karen Brendel
The Burger Social
Joy Burkland
Judy Bush
Sara C.
Casey's Foods
Mary Jane Chapman
The Chase Family
Chicago Steel Hockey
Rosanne Chirumbolo
Shantha Christian
Alice M. Clark
Club Pilates
Richard Colasante
College of DuPage
Abbey Combest
Laura E. Corman
Diane Dassow
Donna Davini
Karen Davis
Terri Delgenio
Gloria DeLuco
Destination Fitness
Driscoll Law Group
Lydia Dunn
DuPage County Bar Foundation
DuPage Tumble and Cheer
Deborah Eason
Felicia Elias
Pat Elliott
Elmhurst Christian Reformed Church
Linda Englander
Ricardo Estrada
European Wax Center
Farmsstead Womens Club
R. Farrell
Jeanne Filipowicz
Cynthia Fingerhut
Fire + Wine
Marina Fleytlikh
Danielle Folkerts
Heidi Ford
Fox Bowl
Fox Valley Junior Women's Club
Fred Astaire Dance Studio
Judy Gasparil
Erika Gerdes
Gia Mia Pizza Bar
James Gilbert
Glen Ellyn Infant Welfare
Bev Goste
Chris Hall
Ann-Marie Hartline
Harvard Maintenance, Inc
Kelly Heinrich
Susan Hill
Nancy Hoekstra
Peter Holmes
Holy Apostles Philoptochos Society
Stella Homicki
Rose Ann Hoof
Pat Hurdle
Illinois Philharmonic Orchestra
Immanuel Lutheran Church
Improv
Jeans and a Cute Top Shop
Laurie Jorgensen
Steve Junk
Lena Kadakia
Mariellen Karstens
Kendra Scott

James Klyczek
Matt Krock
Karin Kukis
Monica Lagunas
Lake Geneva Cruise Line
Carolyn Larimer
Latham & Watkins LLP
David LeMaistre
Barbara M. Lesko
Lettuce Entertain You Enterprises, Inc.
Heather Lewandowski
Harriett Lindstrom
William Lisy
Lord of Life Lutheran Church
Mary Lu Forte
Liz Luszczeek
Made in Italy Trattoria
Ruth Madell
Maize & Mash
Jibran Malik
Marinella Ristorante Italiano
Christy Marnell
Don McCalla
M. McCarthy
Ryan McCreery
Linda McDonald
Jeanna McGinnis
Mike McMahon
Meadowlark Quilters
Martha W. Melman
Virginia Mezo
MFS DuPage League
Judy Montgomery
Melissa Mueller
Naperville Junior Woman's Club
National Council of Jewish Women
National University Health Services, Student Services
Navistar International Used Trucks
Navistar
Dolores Nevinski
Nothing Bundt Cakes
Tom O'Neill
Beth Olson
Gia Oroni
Amy Orton
Kristen Osterhaus
Bonnie Park
Liz Pedota
Virgen Perez-Dormann
Pinot's Palette
Martha Pinto
Fox Bowl
Fox Valley Junior Women's Club
Fred Astaire Dance Studio
Judy Gasparil
Erika Gerdes
Gia Mia Pizza Bar
James Gilbert
Glen Ellyn Infant Welfare
Bev Goste
Chris Hall
Ann-Marie Hartline
Harvard Maintenance, Inc
Kelly Heinrich
Susan Hill
Nancy Hoekstra
Peter Holmes
Holy Apostles Philoptochos Society
Stella Homicki
Rose Ann Hoof
Pat Hurdle
Illinois Philharmonic Orchestra
Immanuel Lutheran Church
Improv
Jeans and a Cute Top Shop
Laurie Jorgensen
Steve Junk
Lena Kadakia
Mariellen Karstens
Kendra Scott

Diane Snyder
Erin Speck
C.J. Spensley
Kristen Springer
Anne Staats
Starbucks
Kecia L. Steelman
Marlyn Steury
Mari Stratton
Adrienne Stricker
Erich Struckmeyer
Nancy Svoboda
Ruth Talcott
Target
Laurel T. Trimarco
TW Chicago
Vantage Point Financial
Margaret Venia
Village Links Glen Ellyn
Village of Lombard Public Works
J. Volpe
ULTA Beauty
Christy Wagnowski
Beth Weiss
Lori Wharton
Wheaton Sports Center
Wheaton Meat Company, Inc.
Whiskey Acres
The White Chocolate Grill
Patrick Whiteside
Julie Will
Leslie C. Wilson
Joseph Wojtowicz
Jenny Wyza
Jennifer Yaremnych
Yoga by Degrees
Linda Youdal
Your Children's Bookshelf
Zonta Club of Oak Brook
Andrea Zwit

MPOWER THE NIGHT EVENT COMMITTEE

Ashley Duchossois Joyce, Board Chair
David Tropp, Board Vice Chair
Erik Barefield
Erica Borggren
Erica Canzona
Piyush Chaudhari
Merle Goldblatt Cohen
Jennifer Comparoni
Marcus Cooper
Tanya Davis
Craig Esko
Graham Gerst
Amanda Graveline
Stephen M. Griesemer
Christy Harris
Roger Hochschild
Tony Hunter
John L. MacCarthy
Queen Bee Quilting
Barbara Rapp
Carol L. Redell
Anne Reiter
Susan Rittili
Thomas Roberts
Chelsey Roberts
Olga Roder
Robert Rogers
Mary Rosean
Sally Beauty
Helene Samek
Elaine Savino
Schmitts Landscape
School Readiness Center
Liza Schramm
Scraps-On-A-Mission
Eileen P. Scudder
Brent Seifts
Mary Kay Sheldon
Sandra Shepard
Shepard Medical Products
Kerin Smith

DUPAGE GALA EVENT COMMITTEE

Dan McGowan, Co-Chair
Emily Shupe, Co-Chair
April Arnold
Tom Carmody
Brian Chmiel
Kristin Chmiel
Sara Clark
Sharon D'Alessandro
Chris Dabovich
Carol Dimas
Stacie Gannon
Chris Humbert
Tom Hutchinson
Max Leichman
Anne Leventry
Philine Lortz
Gene Malloy
Jason Nagel
Marcie Peterson
Jeff Platt
Greg Vesta
Patrick Whiteside
Leslie Wilson

EQUAL ACCESS TO JUSTICE AWARD LUNCHEON HOST COMMITTEE

Leslie M. Smith, Co-Chair
Kenneth Mathieu, Co-Chair
Lisa Acevedo
Amanda Amert
Robert Barrett
Sean Berkowitz
Joel Bertocchi
Jonathan Bunge
Rachel Cannon
Jennifer Cello
Linda Coberly
Zach Fardon
Mark Filip
Cameron Findlay
Angela Frye
Lenny Gail
Steven R. Gilford
John Hartigan
Kyle Harvey
Brian Hegnesbaugh
Mark Hersh
Chantal Kazay
Mike Kendall
Jon King
Scott Lassar
Craig Martin
Doug Nash
Mike Pace
Elizabeth Papez
Cynthia Patton
Matthew J. Renaud
Dave Rosenbloom
Larry Selander
Gil Soffer
Kristofer Swanson
Lori Stanovich Tucker
Antion R. Valukas
Judy Waltz
Nicole Wells

CALUMET MIRACLE ON 103RD STREET INVESTMENT APPEAL COMMITTEE CO-CHAIRS

Jorge Farr-Aguilar
Jennie Betton
Latoyia Huggins
London Rakestraw
Derrick Taylor
Eric L. Thompson

BOARD MEMBERS

BOARD OF DIRECTORS

Ashley Duchossois Joyce, Chair
David S. Tropp, Vice Chair
Leslie M. Smith, Secretary
Aysha Acibucu, Head Start Parent Representative
Hubert Allen
Jerry Azumah
Erik D. Barefield
Debra Bogo-Ernst
Erica J. Borggren
Erica F. Carzona
Robert C. Carr
Saadia Caudle, Head Start Parent Representative
Piyush Chaudhari
Julie Chavez
Julia A. Cloud
Merle Goldblatt Cohen
Jennifer Comparoni
Marcus L. Cooper
Timothy S. Crane
Tanya G. Davis
Jason Dubinsky
Arne Duncan
Craig Esko
C. Gary Gerst
C. Graham Gerst
Steven R. Gilford
James V. Gilliam
Kristine Givens
David P. Glatz
Stephen M. Griesemer
Christy Harris
Wallace Harris, Jr.
Daron Hines
Roger C. Hochschild
R. Thomas Howell, Jr.
Tony W. Hunter
W. Kirk James
Jerome Krulewitch
John L. MacCarthy
Marilyn Marchetti
Aleck Matambo
Glenn Mazade
Jim McDonald
Jackie McLaughlin
Katherine Ann Melman
Martha Whittemore Melman
Peyton H. Owen, Jr.
Diana Palomar
Stephen R. Patton
Virginia Johnson Pillman
Richard Price
Michelle Ramirez
Barbara Rapp
Allen A. Rodriguez
Bryan Rozum
Audrey H. Rubin
Sophia Ruffolo
Kathleen K. Rummel
Lisa Cohen Schenkman
Eileen P. Scudder
Laurie Fetzer Shults
Scott W. Simmons
Scott C. Solberg
Byron O. Spruell
Kecia Steelman
John R. Storino
Michael A. Vardas Jr.
Jared Vegosen

Kamiar Vossoughi
Matthew W. Walch
Jonathan Webb
Debbie K. Wright
Matt Zimmer
Ric Estrada, President & CEO

Advisory Board
Frank M. Clark
John M. Costigan
Karen Crotty
Peter D. Crist
Scott Davis
Victor Elting, III
Michael Foradas
Graham C. Grady
Robert A. Helman
Mrs. William Bruce Hoff, Jr.
Jeremiah S. James, II
Robert S. Karlblom
Donald G. Kempf
Robert P. Knight
Robert C. Knuepfer, Jr.
Edward M. Liddy
C. Kenneth Love
Richard J. Loewenthal
Edward W. Lyman, Jr.
R. Mark Mallory
Mark J. McCarville
Thomas J. McCaffrey
John V.N. McClure
Marilyn McCoy
Michael I. Miller
Jeanne Marcus
Roger Nelson
Nicholas S. Noyes
Barbara Petersen
Daniel F. Rahill
Catherine Siegel
W. Rick Stearns
Jennifer Straub Corrigan
Brian J. White
Alice Wyatt

In Memoriam:
Alan Peterson
Wade Fetzer
Edward K. Banker
L. Bates Lea

LEGAL AID SOCIETY
Matthew W. Walch, Chair
Amanda Amert, Vice Chair
Gregory S. Bailey
Tianne Bataille
Jeffrey Bruns
Jonathan C. Bunge
Linton J. Childs
Robert B. Ellis
Michael Emmert
Kelly A. Fetzer
Angela Frye
Steven R. Gilford
Kyle Harvey
Michael C. Kasdin
Chantal N. Kazay
Brenda McNamara
Ken Mathieu
Anna Novoseletsy
Charles Peters
Rita M. Alliss Powers
Michelle Ramirez

Robert J. Regan
John Richardson
Michael P. Roche
Lewis Rosenbloom
Ethan Samson
Leslie M. Smith
Scott Solberg
Pamela Taylor
Andrew Vail
Christopher Wilmes

METROPOLITAN & LEGAL AID ASSOCIATE BOARD

Amanda Graveline, Co-Chair
William Poirier, Co-Chair
Mackenzie Allen, Co-Vice Chair
Nate Schnader, Co-Vice Chair
Blair Anstaett
Arjun Ahluwalia
Daniel Arras
Jessica Beringer
Jacob Dvoracek
Dan Finnegan
Aaron J. Hersch
Daniel Kach
Marjorie Kennedy
Chris Kuhlman
Wick Lutz
Renzo G. Mejia
Tameka M. Newman
Brian Paladie
Haviland Rummel
Mike Schilling
Steve Schuster
Rachel Servatius
Laura Sexton
Bhush Shah
Emily Uzer
Peter Van Nortwick
Heather Waller

CALUMET COMMUNITY BOARD

Jorge Farr-Aguilar, Co-Chair
Eric L. Thompson, Co-Chair
Jennie Betton
Ledall Edwards
Latoya Huggins
Reverend Michael D. Jacobs
Steve A. James
Dr. Ollie Knight, MSW/ACSW/DHL
Ruby L. Larkin
Paris Lewis
Krishna Lynch
Herrin T. Malone
London Rakestraw
Samantha Stinson
Derrick Taylor
Tanya Terry-Cobbins
Dominique Wallace
Liane K. Williams

In Memoriam:
Ms. Bettye Baker-Houston

Associate Board
Nadine Harris-Clark
Cheryl Freeman Smith
Dr. Joan Hill
Dr. Kimberly A. Mann
Rhonda Perdue
Leaster J. Robinson-Fonville
LaJewell Thompson

DUPAGE COMMUNITY BOARD

Patrick Whiteside*, Chair
April Arnold*, BDSC Chair
Jody Gauthier*, Secretary
Pat Alstrin, Liaison for the Women's Auxilliary
Thomas J. Carmody*, BAC Chair
Brian Chmiel
Sara Clark
Sharon R. D'Alessandro
Heather Eddy
Stacie Gannon
Robert G. Gibson
Chris Humbert
Tom Hutchinson
Steve Junk
Max Leichtman
Anne Leventry
Eugene D. Malloy
Dan McGowan*, Gala Committee Co-Chair
Jim McSherry
Jason Nagel
Mary FitzGerald Ozog
Marcie A. Peterson
Jeffrey R. Platt
Gina Sharp
Emily Shupe*, Gala Committee Co-Chair
Greg Vesta
Leslie Wilson

* Executive Committee Member
BDSC = Board Development and Stewardship Committee
BAC = Board Advancement Committee

Alumni Board Committee

Jim Carter, Co-Chair
Kim Stapleton, Co-Chair
Faiz Ahmed
Matthew Allgood
Alexander (Sandy) Allison
Darrin Bacon
Larry Carroll
Robert Christie
Ryanne Dent
Pete DiCianni
Tim Elliott
Howard Goldstein
Steve Gonzalez
Michael Gresk
Randall Hultgren
Robert Hutchinson
Joseph Imburgia
Nick Keseric
Dean Leffelman
Glenn Mazade
Charles McKenna
Greg Meyer
Carl Neumann
Frank Pecora
Ed Perez
Sally Porter
Paul Pyrcik
Susan Rose
Daniel Schuchardt
Mike Skarr
Pamela Sharar-Stoppel
John Stitzell
Terrence Taylor
Reji Tharakan
Michael Thorp

FSS of MFSD Advisory Council

Hon. Robert Anderson
Karen Ayala
Hon. Patricia Bellock
Robert Berlin
Michael Burke
Michael Busse
James Carroll
Hon. Dan Cronin
Mary Lynn Fayoumi
David Fox
Michael Goebel
Hon. Gwen Henry
Ann Jorgensen
William Kottman
Bette Lawrence Water
Brian Lemon
Dean Malone
Joe Martin
Mary Lou Mastro
Sue Mitchel
Susan Mitchell
Hon. David Olsen
Adam Page
John Roland
Hon. Peter Roskam
Dr. Darlene Ruscitti
Eileen Sachanda
Nanette Silva
Maureen Sullivan Taylor
Paul Travers
Martin Tully
Steve Webster
Hon. John Zaruba

MIDWAY COMMUNITY BOARD

Harry Meyer, Chair
Donnica Austin-Cathey
Anne Clancy
David De Santiago
Norma Irizarry
Christine (Tina) James
Manny Jimenez
Dave Leeney
Daniel Loftus
Camille Odeh
Griselda Piedra
Natali Rehman

NORTH COMMUNITY BOARD

Carina E. Sánchez, Chair
Maggie Antillon-Mathews
Maribel Arroyo
George Borovik
Dr. Ana Gil Garcia
Christian Gutierrez
Eric B. Lugo
Alberto Ortega
Patricia Rodriguez
Michael Sobczak

SOUTHEAST CHICAGO COMMUNITY BOARD

Shirley Carter, Chair
Da Lina Bailey
Tevonne Ellis
Loraine Moreno
Sandy Duran
Laurentino Ramirez

THE FAMILY TRUST

Strong families create strong communities.

The members of our Family Trust, comprised of supporters who have committed to including Metropolitan Family Services in their financial plans, ensure their family’s crucial investment today will help families across Chicagoland reach their greatest potential for generations to come.

This year, Metropolitan Family Services Mpowered 117,491 families to learn, earn, heal, and thrive. When you strengthen your own family’s financial future through the Family Trust, you’re also strengthening the future of every one of our families, and the future of the communities we all call home.



“Metropolitan’s strong leadership and tangible impact are critical today and it is apparent to us, must endure to positively impact the Chicago area for future generations. Their data focus, strategic plan, and program outcomes make it possible to envision a level of permanence. It was an important decision for my family to establish an investment plan for Metropolitan Family Services in our will and support the perpetuity of their vision. Our commitment to our neighbors and love for Metropolitan Family Services are our driving force to become proud Family Trust members and update our estate plan.”

– Mr. and Mrs. Erik Barefield, Members, The Family Trust

FAMILY TRUST MEMBERS

Anonymous
Natalie Anenberg
Patricia Ashbrook
Mr. and Mrs. Erik Barefield
Robert and Darden Carr
Jennifer Comparoni and Matthew Bernstein
Dennis Conroy
Jennifer Straub Corrigan and Patrick Corrigan
Emily and John Costigan
Marie and Craig Duetsch
Jan and Jerry Erickson
Robert and Anne Faurot
Wade and Beverly Fetzer
Rhona and Julian Frazin
Virginia and Gary Gerst
Julie Hall
Elizabeth Harrington
Kyle Harvey
Jane Holzkamp
Jerry James and Kitty Bliss
Carol B. Johnson
Richard L. Jones
Ashley and Michael Joyce

Arthur O. Kane
Robb Knuepfer
Nancy and Robb Knuepfer, Jr.
Marcia and Dave Knuepfer
Richard Loewenthal
Anne and Ed Lyman
Nancy Lynn and Andy Teitelman
John and Lisa McClure
Martha and Richard Melman
Diana Palomar
Phyllis and Edgar Pearsa
Barbara Petersen
Ginger and Stanley Pillman
Barbara Rapp
Beth Dovenmuehle Rothermel
Patrick J. Schauer
Eileen P. Scudder and Russ Zimmermann
Alfreda Shapere
Laurie and Jim Shults
John Stitzell
James E. Thompson
Donna and David Tropp
Guy and Janice Vitello



Establish Future Gifts In Your Estate Plan

www.metrofamily.org/family-trust

To learn more, contact:
Barbara West Stone
Chief Development Officer
(p) 312-986-4028
(e) westb@metrofamily.org



HIGHLIGHTS

COMMUNITY CONNECTION IN THE **METROPOLITAN** FAMILY

How has your sense of place and togetherness changed this year? As we recover together from the pandemic, we’re discovering new and reworked spaces of community, both physical and virtual. We’re seeing moments of progress big and small take on new significance.

As we’re evolving and redefining what support and community look like together, we’re proud to be a consistent presence for our families. Metropolitan has been here through it all.

“Since the first time I met and talked with Ms. Ruidias, it was very evident her children were her number one priority.”

Ms. Ruidias, a single mother of four whose two youngest children go to our North Children’s Center, lost her job in the restaurant industry during the pandemic, and due to various complications, did not qualify for unemployment. She wasn’t alone.

Natalie Quintanilla, a Family Support Worker at our North Center, checks in with Ms. Ruidias weekly. She takes advantage of every opportunity and resource Natalie shares, from financial assistance with bills and rent to free internet. Now Ms. Ruidias is working part-time while accommodating her children’s schedules, and feels hopeful about the upcoming school year.



Rochelle, a client of the Legal Aid Society’s Domestic Violence programs, shared her story of surviving and leaving an abusive situation at our Equal Access to Justice Award Luncheon. “It’s just me and my baby. I don’t have no parents, I don’t have no friends, I don’t have too many family members, and I’m so happy I gained a family through the situation I was going through.”

Loren Gutierrez, Managing Attorney of LAS’ Safety and Family Practice Group, led that family - a team navigating virtual communication and court appearances to work toward an Order of Protection for Rochelle. When the court finally granted her Order of Protection, Rochelle shares,

“I felt like I could breathe and that I could sleep. I felt like I got help and felt like you [LAS] were there with me, even if you weren’t there physically.”

**The Legal Aid Society’s
Domestic Violence programs
MPOWERED 881 CLIENTS**

Handled **935 CASES** involving brief
and extended **legal services**

Handled **278 ORDERS**
of **protection** for **151 CLIENTS**

Our 40th annual Mpower the Night celebrated the power of community transformation. Each element of our program celebrated the progress and impact of collaboration and community connection, including a discussion on the future of urban agriculture and community development with the leaders of the organizations comprising We Grow Chicago.

MPOWERED COMMUNITY PARTNERS

We Grow is a new collaborative addressing food equity and community empowerment, led by West Englewood community organizations.

“[We Grow is] a sustainable umbrella organization for supporting West Englewood families so they can go from surviving to thriving,” says Michelle Rashad, Executive Director of We Grow and Imagine Englewood if, a We Grow partner organization.

“We also hope our Peace Campus will serve as a new place-based model for uplifting Black and Brown communities that can be scaled across the city and nation.”



HIGHLIGHTS

South Side Weekly featured Vanessa Schwartz, Executive Director of our Southeast Chicago Center and born and raised in the community, about her leadership in a community activism effort to stop a major company, General Iron, from moving a scrap metal plant to the area.

SOUTH SIDE WEEKLY



Welcome to our new Headquarters!

"There's something here for everybody," shares Bryan Johnson, Senior Director of Evaluation and Outcomes, referring to Focus Rooms for personal space, Zoom Rooms for virtual meetings, and windows throughout for natural light. "This space will allow for most sites to be empowered; through our grants work, through our evaluation, through our strategy and direction."



Everyone should have access to fresh, healthy food, no matter where they live!

Our Calumet Center holds regular food distribution events in our Roseland community.

Our Altgeld Youth Leadership Program is fighting food insecurity with its own youth-led food pantry, offering healthy and fresh grocery options in an under-resourced area.



HIGHLIGHTS

Mpowered to Advocate

Our first-ever Legislative Roundtable offered our staff and clients a virtual space to connect with their legislators, sharing their experiences and advocating for issues important to them and our communities.

Maciej, a client in our Southwest Center’s Behavioral Health program, talked about a safe space he’s developed with his therapist, Katie.

“She really saved me, honestly,” he shares. “I could see right away that the care was there, like nothing I had experienced before.”



Future Kindergarteners coming through! Our Midway Children’s Center kids visited their neighborhood elementary school to explore the classrooms they’ll be in next year, and really enjoyed this experience as preparation for their big transition.



Especially in our home-based programs, we’re grateful for creative new opportunities to gather together – like an afternoon in the park! This socialization event for DuPage Center families focused on gross motor development, or skills that use body movements - in this case, yoga!



HIGHLIGHTS

Our Southeast Chicago Center's Behavioral Health program hosted a Family Funday to engage staff and families in fun, energizing and physical activities to support community healing. As we emerge from sheltering in place cut off from support systems, to racial violence and injustice, to remote learning and telehealth, and beyond, we appreciated the opportunity to reconnect.



A group of volunteers from Mesirow joined our Skokie Center staff to help kick off an exciting refresh of our interior and exterior spaces! Applying more than 14 gallons of fresh paint transformed our waiting room and hallways into a more friendly area for our staff and families. We're also looking forward to welcoming our Skokie Valley community with new landscaping and signage outside.



Our first in-person Metropolitan Peace Academy graduation since the pandemic brought together nine cohorts of outreach workers and case managers to celebrate their achievements. **In the iconic words of Director of Training Vanessa Perry DeReef ... BOOM!**



IMPACT IN NUMBERS

METROPOLITAN COMMUNITY WRAPS AROUND OUR FAMILIES

ENGAGED 23,540

households and family members of program participants

REACHED 48,434

attendees in trainings, workshops, health fairs, and resource fairs

CONNECTED 17,881

individuals to additional resources, either inside Metropolitan or to our partner organizations

EMOTIONAL WELLNESS

ACROSS OUR BEHAVIORAL HEALTH PROGRAMS

5,560
CLIENTS

7,399
FAMILY MEMBERS

96% of clients shared their overall health improved as a result of MFS services

EDUCATION

EARLY LEARNING Across all Center-Based and Home-Based programs:

1,268 CHILDREN AGES 0-5

1,383 FAMILY MEMBERS

COMMUNITY SCHOOLS

5,241 STUDENTS enrolled in programming at 28 partner schools, K-12

580 PARENTS enrolled in activities

ECONOMIC STABILITY

WORKFORCE DEVELOPMENT

97% of participants in Workforce Development programs completed a Job Readiness Training

63% increased their financial net worth by paying off debts or increasing household income

FINANCIAL OPPORTUNITY CENTER

417 JOB-SEEKERS EMPOWERED through career and financial coaching, job training and placement, resume writing, and other employment support

EMPOWERMENT

DOMESTIC VIOLENCE SERVICES

4,757 CLIENTS received Domestic Violence services including counseling, legal advocacy, economic self-sufficiency, and other supports

24,954 PEOPLE attended **853 community presentations** on Domestic Violence

6,507 CALLERS to our **24/7 hotline** connected with support, information, and referrals

LEGAL AID SOCIETY

13,226 CLIENTS SERVED including **4,186** FAMILY MEMBERS

435 Orders of Protection legally protected survivors of domestic violence

3,684 connected to additional support via referrals, legal clinics, and know-your-rights presentations

METROPOLITAN PEACE INITIATIVES (MPI)

120 PARTICIPANTS received Workforce Development support, including Job Readiness Training, skill-based training, and GED attainment

101 PARTICIPANTS received Behavioral Health support, including counseling and connections to community-based healthcare

COMMUNITIES PARTNERING 4 PEACE (CP4P)

Metropolitan Peace Academy

63 GRADUATES from the 144-hour curriculum professionalizing street outreach

Street Outreach

Community canvassing reached **137,791** key individuals spanning **101,003** hours

5,321 MEDIATIONS COMPLETED by identifying and responding to conflicts

Light in the Night

48,730 ATTENDEES

at **764 COMMUNITY EVENTS**



